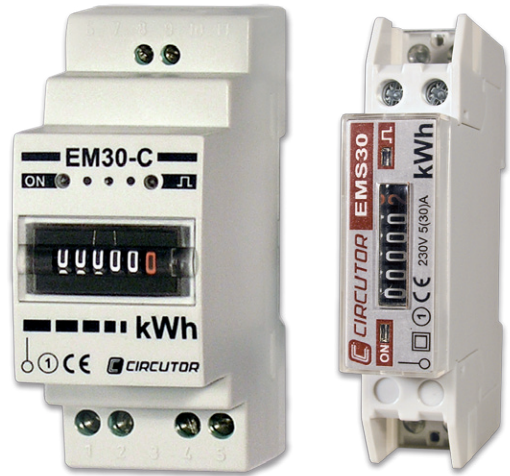


## Direct single-phase meters

# EM30-C / EMS30-C

Electromechanical single-phase energy meters with direct connection for DIN rail mounting



## Description

Electromechanical single-phase meters for active energy, with direct connection for DIN rails.

Other features include:

- Mechanical 6 digit display: 5+1 decimal
- Size of 1 module (**EMS30-C**) and 2 modules (**EM30-C**)
- Indication of a connection error
- 1 digital impulse output with optoisolated transistor, for energy consumed

## Application

- Control of energy consumption in very small spaces
- In applications with severe temperature conditions. The working life of the unit's mechanical display is not affected by high temperatures.

## Features

<b>Voltage circuit</b>	230 Vac (-20...+15%)
Consumption	< 2W
Frequency	50...60 Hz
<b>Current circuit</b>	
Minimum current	20 mA
Nominal current	5 A
Maximum current	30 A
<b>Maximum meter value</b>	<b>99,999.9 kWh</b>
<b>Class/Accuracy</b>	<b>Class 1</b>
<b>Output transistor</b>	Optoisolated (collector open) NPN
Maximum switching voltage	35 V dc
Maximum switching current	50 mA
Impulse duration	250 ms on / 250 ms off
Energy output	100 imp / kWh (no programmable)
Insulation	500 V c.c. ( $10^{10} \Omega$ )
<b>Ambient conditions</b>	
Operating temperature	-20 ... +50 °C
Altitude	2000 m
<b>Build features</b>	
Minimum display resolution	100 W·h
Type of box	DIN rail
Degree of protection of terminals	IP 20
Dimensions	1 <b>EMS30-C</b> module / 2 <b>EM30-C</b>
<b>Standards</b>	
IEC/EN 62053-31, IEC/EN 62053-21	

## Direct single-phase meter EM30-C / EMS30-C

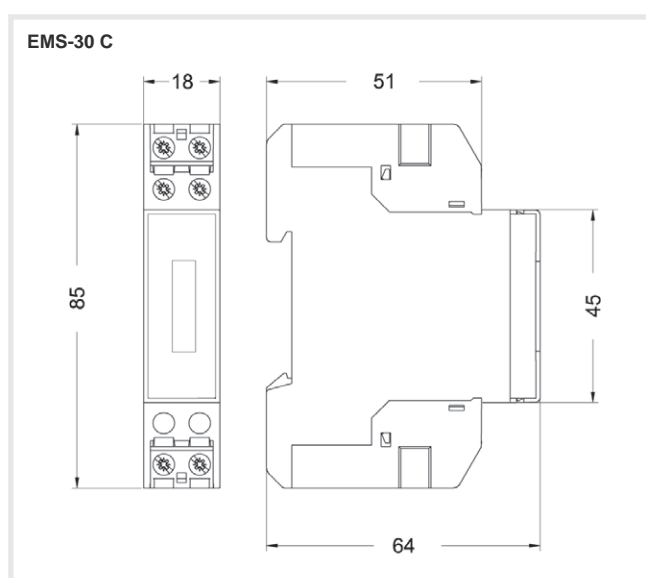
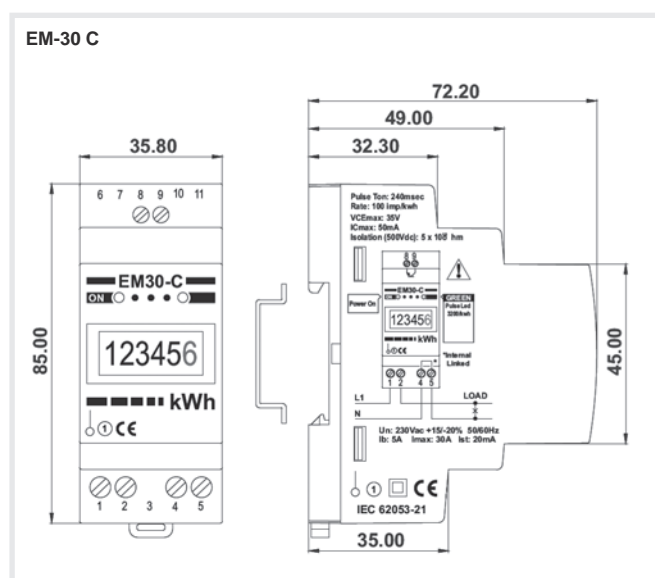
Electromechanical single-phase energy meters with direct connection for DIN rail mounting



### References

Parameters measured	Input range	Partial meters	Quadrants	Rates	Digital output	DIN Modules	Type	Code
kW-h	20 mA...30 A	-	2	-	1	2	EM30-C	M30811
kW-h	20 mA...30 A	-	2	-	1	1	EMS30-C	M31611

### Dimensions



### Connections

